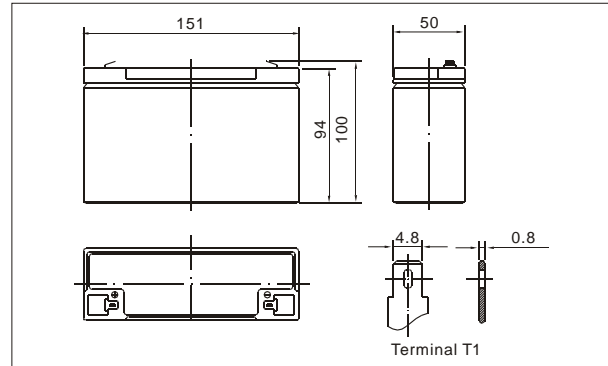




● **Outer dimensions (mm)**



The CHIWAY sealed lead-acid rechargeable battery (VRLA battery) is leak-proof and maintenance free. The Superiority of VRLA battery is derived from its uniquely efficient oxygen recombination technology. The oxygen evolved from the positive plates diffuses through the micro porous glassfiber mat to the negative plates where it is changed back to water by recombination reaction, eliminating the need for water addition. The result is a maintenance free battery.

● **Battery Construction**

Component	Positive plate	Negative plate	Container	Cover	Safety valve	Terminal	Separator	Electrolyte
Raw material	Lead dioxide	Lead	ABS	ABS	Rubber	Copper	Fiberglass	Sulfuric acid

● **General Features**

- Absorbent Glass Mat (AGM) technology for efficient gas recombination of up to 99% and freedom from electrolyte maintenance or water adding.
- Not restricted for air transport-complies with IATA/ICAO Special Provision A67.
- UL-recognized component.
- Can be mounted in any orientation.
- Computer designed lead, calcium tin alloy grid for high power density.
- Long service life, float or cyclic applications.
- Maintenance-free operation.
- Low self discharge.

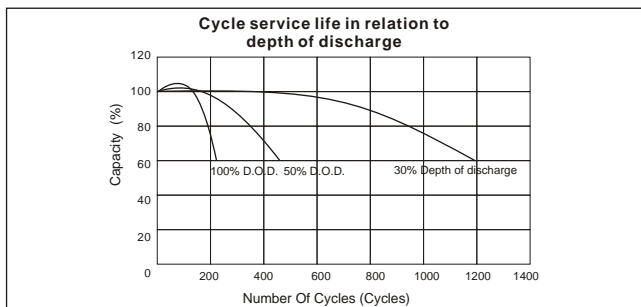
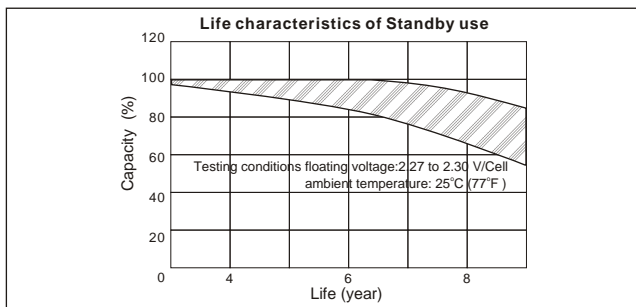
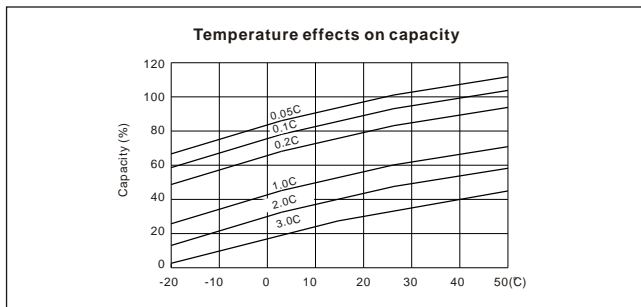
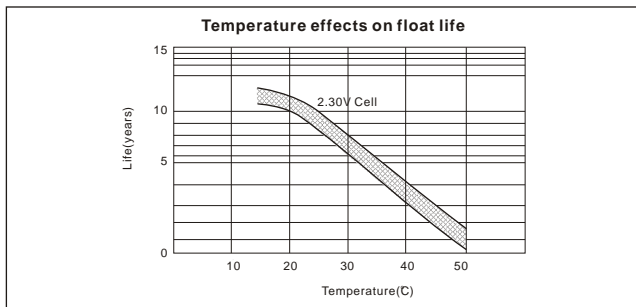
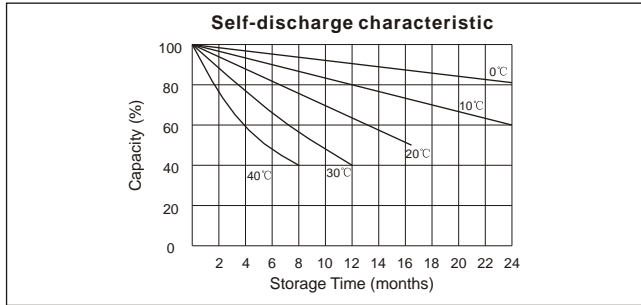
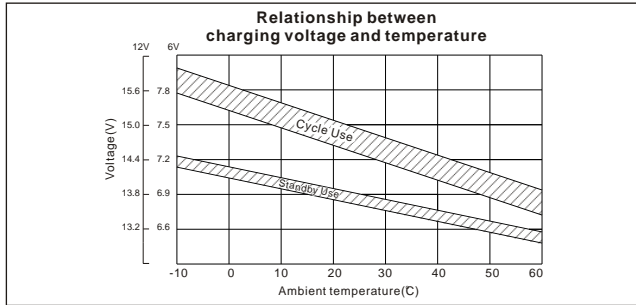
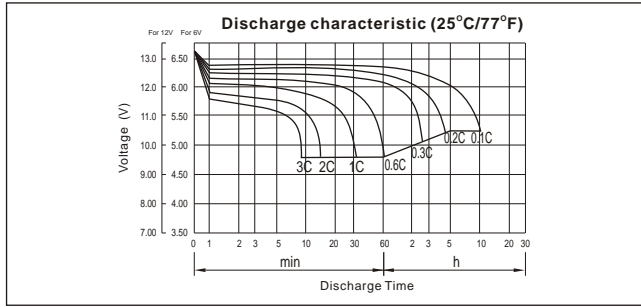
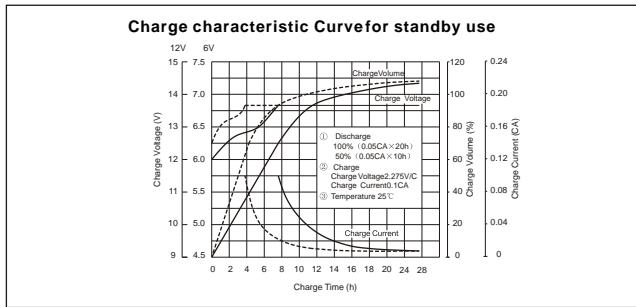
● **Application**

- Electric powered vehicles
- Golf cars and buggies
- PDA equipment as laptop computer,
- Camera, phone sets, medical sets
- Power tools, Lawn mowers, vacuum cleaners
- Electric Powered Toys
- Wheel Chairs

● **Specifications**

Nominal Voltage		6V
Capacity (20 hr 25°C)		10 Ah
Design Life		3-5 Years
Dimensions	Length	151mm (5.94 inch)
	Width	50mm (1.97 inch)
	Height	94 mm (3.70 inch)
	Total Height	100mm (3.94 inch)
Approx. Weight		1.85 Kg (4.08 lbs)
Capacity 25°C (77°F)	20 hr rate	10Ah
	10 hr rate	9.3Ah
	5 hr rate	8.5Ah
	1 hr rate	6Ah
Internal Resistance (Full charged Battery at 25°C (77°F))		12m Ω

Capacity affected by Temperature (20hr)	40°C	102%
	25°C	100%
	0°C	85%
	-15°C	65%
Self-Discharge at 25°C	3 month	Remaining capacity: 91%
	6 month	Remaining capacity: 82%
	12 month	Remaining capacity: 65%
Normal operating temperature		25°C ± 3°C (77°F ± 5°F)
Operating temperature range		-15°C ~ 50°C (5 ~ 122°F)
Float charging voltage (25°C)		6.80 to 6.90V
Cyclic charging voltage (25°C)		7.25 to 7.45V
Maximum charging current		4.0A
Terminal material		Copper
Maximum Discharge current		150A (5sec)



F.V./Time	Constant Current Discharge Characteristics(Amperes,25°C)								Constant Power Discharge Characteristics(Watts,25°C)							
	5min	10min	15min	30min	1h	3h	5h	10h	5min	10min	15min	30min	1h	3h	5h	10h
5.40V	25.08	23.83	11.00	6.25	2.67	1.75	1.00	0.50	158.58	105.00	44.58	27.00	14.25	9.42	5.30	3.04
5.25V	28.00	25.00	11.25	6.42	2.67	1.75	1.00	0.50	171.00	112.92	47.58	28.50	14.67	9.75	5.42	3.07
5.10V	32.00	25.33	11.58	6.58	2.75	1.83	1.00	0.50	184.08	120.83	50.67	30.00	15.00	10.17	5.47	3.08
4.80V	35.08	26.67	12.08	6.83	2.75	1.83	1.00	0.50	210.00	136.83	56.25	33.00	15.75	10.50	5.47	3.13

Packing Dimensions	329*286*124mm	Quantity Per Box	10 pcs	Net weight Per Box	18.5 kg	Gross weight Per Box	19 kg
Splint	Europe (1200*800mm)	Australia(1150*1100mm)	Standard(1100*950mm)	Nonstandard (1000*870mm)			
20'RY 8.5'	9.240k		9.400k		9.480k		9.480k



SHENZHEN CHIWAY BATTERY CO., LTD.

Jingyi Industrial Zone, NO.528 Jinbi Road, Pingshan Town, Longgang District, Shenzhen, China.
 Tel: (+86-755) 8993 0038 8993 1028 Fax: (+86-755)8993 0306 E-mail :sales@chiway-battery.com

www.chiway-battery.com