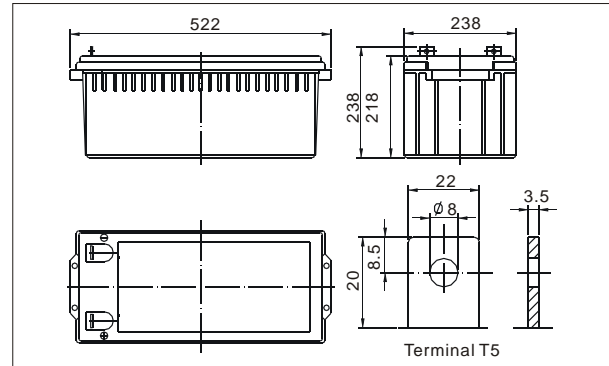




● **Outer dimensions (mm)**



The CHIWAY sealed lead-acid rechargeable battery (VRLA battery) is leak-proof and maintenance free. The Superiority of VRLA battery is derived from its uniquely efficient oxygen recombination technology. The oxygen evolved from the positive plates diffuses through the micro porous glass fiber mat to the negative plates where it is changed back to water by recombination reaction, eliminating the need for water addition. The result is a maintenance free battery.

● **Battery Construction**

Component	Positive plate	Negative plate	Container	Cover	Safety valve	Terminal	Separator	Electrolyte
Raw material	Lead dioxide	Lead	ABS	ABS	Rubber	Copper	Fiberglass	Sulfuric acid

● **General Features**

- Absorbent Glass Mat (AGM) technology for efficient gas recombination of up to 99% and freedom from electrolyte maintenance or water adding.
- Not restricted for air transport-complies with IATA/ICAO Special Provision A67.
- UL-recognized component.
- Can be mounted in any orientation.
- Computer designed lead, calcium tin alloy grid for high power density.
- Long service life, float or cyclic applications.
- Maintenance-free operation.
- Low self discharge.

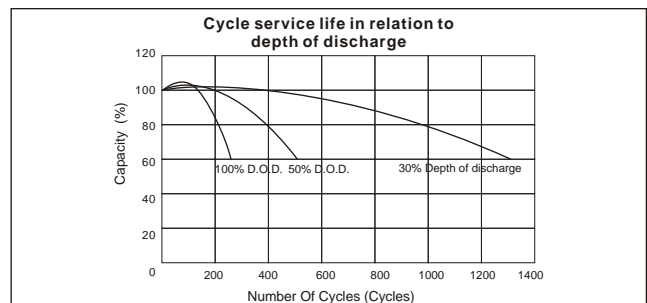
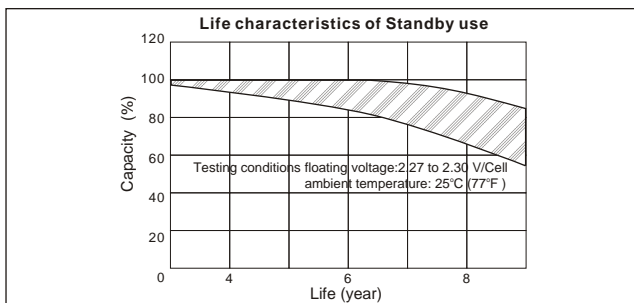
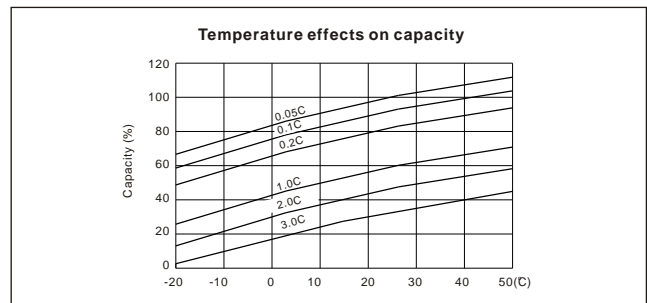
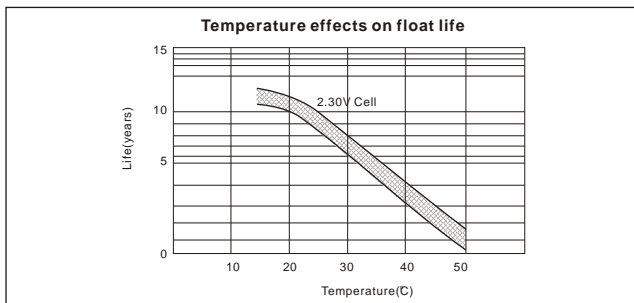
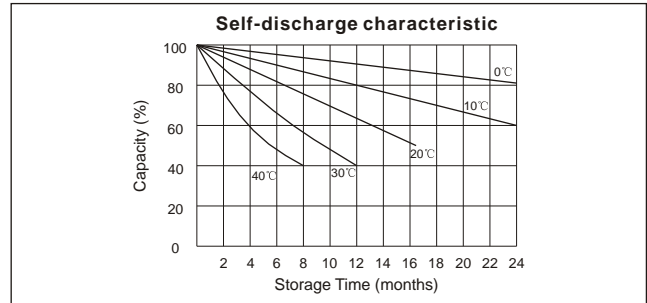
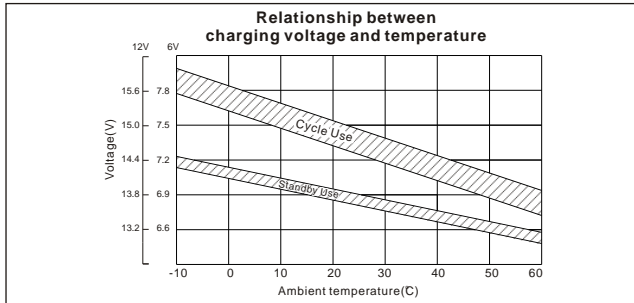
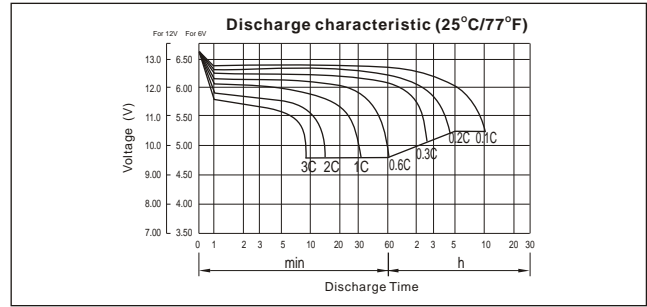
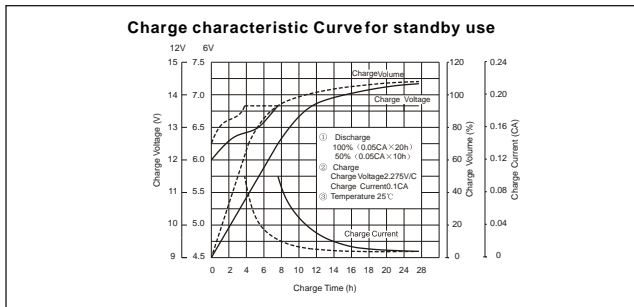
● **Application**

- Alarm System
- Medical Equipment
- Cable Television
- Control Equipment
- UPS
- Communication Equipment
- Toys
- Emergency power System
- Power Tools
- Security System

● **Specifications**

Nominal Voltage		12V
Capacity (10 hr 25°C)		200Ah
Design Life		10 Years
Dimensions	Length	522 mm (20.55 inch)
	Width	238 mm (9.37 inch)
	Height	218 mm (8.58 inch)
	Total Height	238 mm (9.37 inch)
Approx. Weight		65 Kg (143.3lbs)
Capacity 25°C (77°F)	10 hr rate	200Ah
	3 hr rate	160Ah
	1 hr rate	130Ah
Internal Resistance (Full charged Battery at 25°C (77°F))		3mΩ

Capacity affected by Temperature (20hr)	40°C	102%
	25°C	100%
	0°C	85%
	-15°C	65%
Self-Discharge at 25°C	3 month	Remaining capacity: 91%
	6 month	Remaining capacity: 82%
	12 month	Remaining capacity: 65%
Normal operating temperature		25°C ± 3°C (77°F ± 5°F)
Operating temperature range		-15°C ~ 50°C (5 ~ 122°F)
Float charging voltage (25°C)		13.60 to 13.80V
Cyclic charging voltage (25°C)		14.50 to 14.90V
Maximum charging current		60A
Terminal material		Copper
Maximum Discharge current		1600A (5sec)



F.V/Time	Constant Current Discharge Characteristics(Amperes,25°C)								Constant Power Discharge Characteristics(Watts,25°C)							
	5min	10min	15min	30min	1h	3h	5h	10h	5min	10min	15min	30min	1h	3h	5h	10h
10.80V	532.0	381.8	288.0	176.0	124.0	50.00	33.60	20.00	5860.0	4121.2	3160.0	2000.0	1420.0	580.0	390.0	238.8
10.50V	560.0	397.0	330.0	196.0	126.0	52.00	34.88	20.20	6160.0	4254.5	4254.5	2240.0	1447.9	610.0	410.0	240.0
10.20V	600.0	409.1	351.8	216.0	128.0	53.00	35.60	20.40	6500.0	4387.9	3860.0	2460.0	1472.1	620.0	416.0	241.2
9.60V	700.0	427.3	390.0	240.0	130.0	54.00	35.60	20.60	7600.0	4618.2	4300.0	2760.0	1492.1	630.0	420.0	242.4

Packing Dimensions	546*262*267mm	Quantity Per Box	1 pcs	Net weight Per Box	65kg	Gross weight Per Box	65.5 kg
Splint	Europe (1200*800mm)	Australia(1150*1100mm)	Standard(1100*950mm)	Nonstandard (1000*1050mm)			
20'DRY 8.5'	264PCS		270PCS	276PCS		270PCS	



SHENZHEN CHIWAY BATTERY CO., LTD. www.chiway-battery.com
Jingyi Industrial Zone, NO.528 Jinbi Road, Pingshan Town, Longgang District, Shenzhen, China.
Tel: (+86-755) 8993 0038 8993 1028 Fax: (+86-755)8993 0306 E-mail : sales@chiway-battery.com